

Selenium in Saline Waters

The Great Salt Lake (GSL) is a large migratory bird habitat with very high salinities (12% - 27%), up to 7.5x that of seawater. Selenium cycling and monitoring in the lake is the first important step in understanding potential biomagnifications and their impact on bird populations.

The combination of SC-FAST with ELAN DRC ICPMS facilitates low level Se determinations in high salinity samples that are both precise and accurate.

Benefits of SC-FAST for Elan

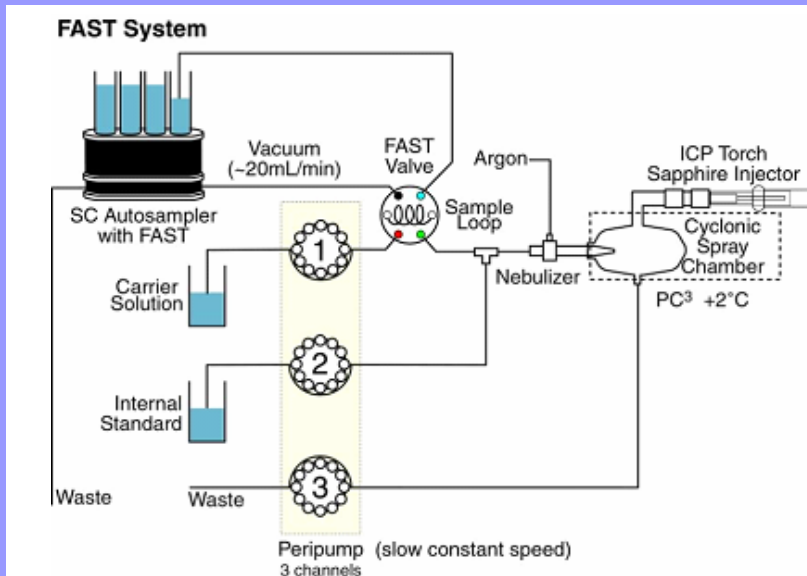
- Signal enhanced
- Stability improved
- Throughput doubled
- Salt load reduced



SC-FAST for Elan

Sample Preparation:

0.5mL methanol and 0.5mL nitric acid are added to 2mL of filtered (0.4µm) sample and made up to 50mL with high purity (18MΩ) water. (25x dilution)

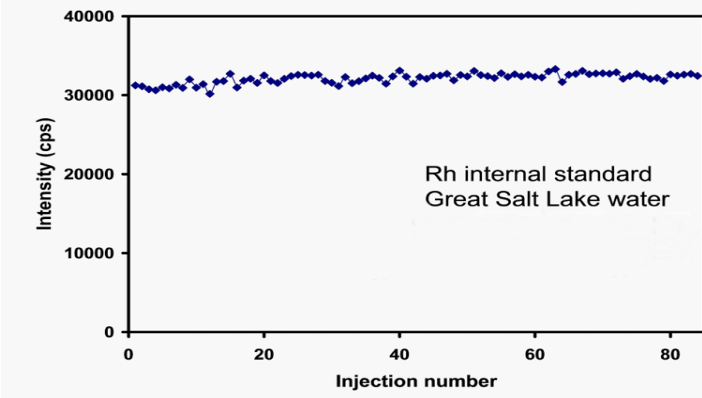


Salt free ELAN sampler cone after >300 GSL samples

Nebulizer Liquid Flow rate: 300µL/min
 Internal Standard : Rh
 Carrier Solution: 1% HNO₃
 Nebulizer: PFA-ST

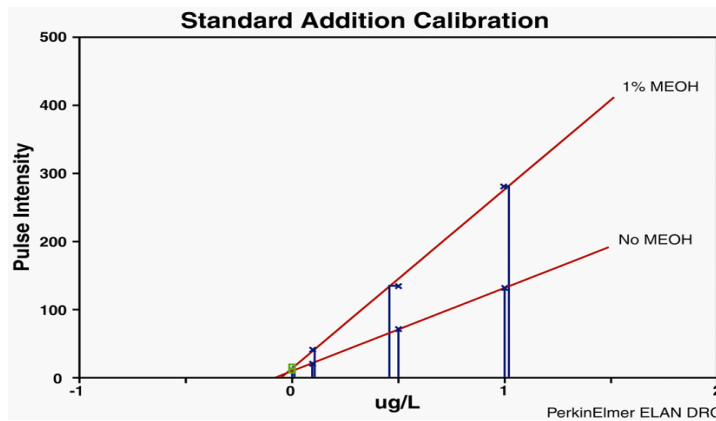
ICP-MS: PE ELAN DRC
 Forward Power: 1600W
 Cell Gas: O₂, 1.5mL/min
 m/z: 80

Stability



- > 80 replicates injections of 25 fold diluted sample.
- > 0.5% Total dissolved solids
- ~ 3% RSD, excellent precision
- No salt deposition on ICPMS cones
- Increased throughput

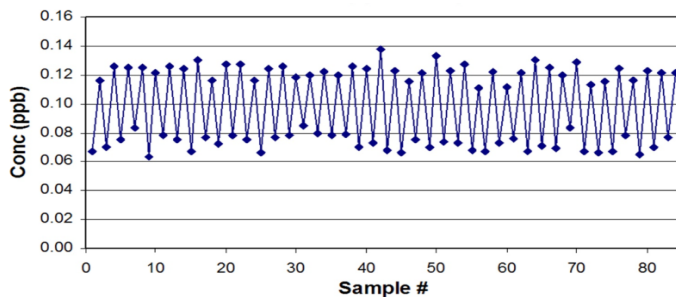
Calibration Data



- Carbon enhancement effect on poor ionizers such as Se
- Low blanks
- Improved detection limits

DL as Analyzed	DL in GSL Water
0.017 ppb	0.40 ppb

Recovery



Precision & accuracy	
Spike	0.040 ppb
Det. (n=5)	0.041ppb
RSD (%)	4.5

Alternate analysis of GSL sample & 40ppt spiked GSL sample, showing excellent precision and accuracy.

Summary

- The SC-FAST with ELAN method
- 1) Increases signal and stability
 - 2) Decreases uptake and wash
 - 3) Increases sample throughput
 - 4) Reduces salt load and cone deposition

Elemental Scientific
2440 Cuming St.
Omaha, NE 68131 USA
www.elementalscientific.com

Phone: 402.991.7800
Fax: 402.991.7799
Email: esi@icpms.com

